

# SR41

## TECHNICAL DATA (approx.)

*HT COUPE*

Length over all incl. bathing platform	13,23 m	13,23 m
Length hull	11,70 m	11,70 m
Length waterline	9,40 m	9,40 m
Beam of hull	3,99 m	3,99 m
Height above waterline, excl. Antenna	3,46 m	3,46 m
Draught drive raised	0,77 m	0,77 m
Draught drive lowered	1,02 m	1,02 m
Draught IPS (approx.)	n/a	n/a
Dry weight (approx.)	10.438 kg	10.638 kg
Fuel tank (approx.)	750 L	750 L
Water tank (approx.)	240 L	240 L
Cabins	2	2
Head	2	2
CE category	B6 (with D4) / B10	B10
<b>BASE PRICE EX WORKS (EXCL. VAT)</b>	<b>333.230,00 €</b>	<b>359.230,00 €</b>

### MERCUISER GASOLINE ENGINE

2 x 6.2L -350- DTS EC (2 x 350 hp / 2 x 261 kW)	Standard	Standard
AXIUS PREMIUM JOYSTICK	12.500,00 €	12.500,00 €

### VOLVO PENTA GASOLINE ENGINE

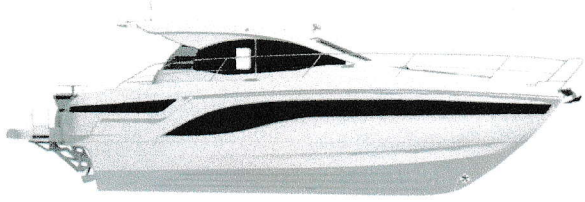
2 x V8-350-CE 5.3L (2 x 350 hp / 2 x 261 kW)	334.535,00 € ✕	360.535,00 €
AQUAMATIC JOYSTICK DPS	15.530,00 € ✕	15.530,00 €

### VOLVO PENTA DIESEL ENGINES

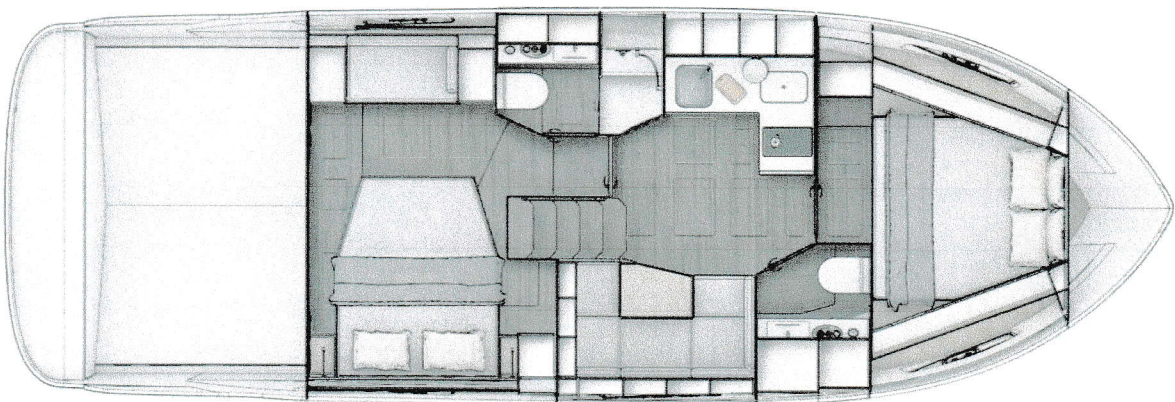
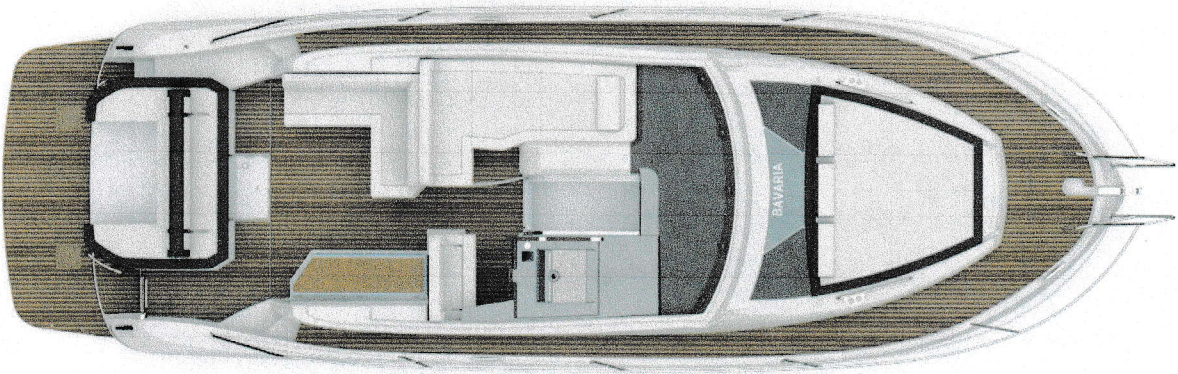
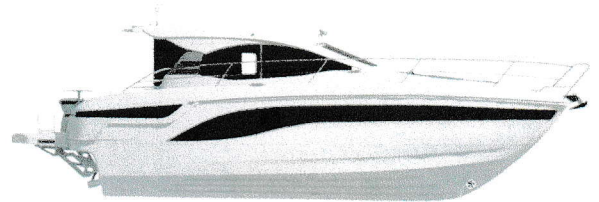
2 x D4-300 EVC (2 x 300 hp / 2 x 221 kW)	381.230,00 €	not available
2 x D6-380 EVC (2 x 380 hp / 2 x 279 kW)	396.980,00 €	422.980,00 €
AQUAMATIC JOYSTICK	16.950,00 €	16.950,00 €



HT



COUPE



OPTIONAL PACKAGES

Price excl. VAT

SR41

**COMFORT PACKAGE (C)**

**PACKAGE CONTENTS**

17.090,00 €

- Refrigerator in cockpit, 80 liters, 12 V
- Light package exterior incl. underwater-, step and side deck lighting
- Cold foam mattress with memory top for all berths
- Toilet for heads (2 x), fresh water, electric
- Sunpad on foredeck
- Teak on cockpit floor
- Lighting package interior
- Venetian blinds for hull windows in salon, aft and forward cabin

UPGRADE: Esthec on cockpit floor

450,00 €

**ENTERTAINMENT PACKAGE**

**PACKAGE CONTENTS**

2.980,00 €

- Fusion MS-RA770 Apollo with DAB+
- two speakers each in salon and cockpit
- Remote control Fusion ERX400 Apollo in cockpit

UPGRADE: TV cabling in salon, digital and analogue, incl. antenna

890,00 €



SINGLE OPTIONS		Price excl. VAT	SR41
<b>HULL</b>			<b>PACK</b>
<b>STANDARD</b>			
<ul style="list-style-type: none"> <li>Hull in hand layup sandwich construction, Signal White</li> </ul>	<ul style="list-style-type: none"> <li>Hull innerliner, Signal White</li> <li>Hull stripe black</li> </ul>	<ul style="list-style-type: none"> <li>Hull windows in mineral glass with openable port lights (8 x)</li> </ul>	
<b>PROPULSION</b>			
<b>STANDARD</b>			
<ul style="list-style-type: none"> <li>Multifunction display, digital, 7" touch screen, giving current and average fuel consumption plus engine information (only Volvo engines)</li> <li>EVC electronic throttles for twin engines (only Volvo Engine)</li> </ul>	<ul style="list-style-type: none"> <li>Z-Drive with hydraulic steering (MerCruiser engines)</li> <li>Twin engines MerCruiser - electronic throttles with cruise control and single lever (only MerCruiser engines)</li> <li>Lenco trim tabs (electrically adjustable) with Mente Marine Panel</li> </ul>	<ul style="list-style-type: none"> <li>Powertrim assistant (only Volvo Engine)</li> <li>Engine compartment fan</li> <li>Engine compartment lights</li> <li>Fuel tank, 1 x 750 L</li> <li>Fuel system</li> <li>CE-fire extinguishing system</li> </ul>	
<b>OPTIONS</b>			
Water in fuel-kit (additional water sensor in fuel filter with alarm; only with Volvo Diesel Engine)		990,00 €	<input type="checkbox"/>
Bow thruster (100 kgf), incl. service batteries, 1 x 12 V / 140 Ah, AGM		5.990,00 €	<input checked="" type="checkbox"/>
<b>NAVIGATION</b>			
<b>STANDARD</b>			
<ul style="list-style-type: none"> <li>Multifunction display Simrad G07 XSR 7" with integrated GoFree™ Wi-Fi and Bluetooth; all-weather touch screen on main helmstand</li> </ul>	<ul style="list-style-type: none"> <li>Transducer for speed, depth and temperature</li> <li>Compass illuminated</li> </ul>	<ul style="list-style-type: none"> <li>LED Navigation lights (BSH certification)</li> <li>Signal horn</li> </ul>	
<b>OPTIONEN</b>			
Multifunction display 2 x Simrad G09 XSE 9" with integrated GoFree™ Wi-Fi and Bluetooth; all-weather touch screen on main helmstand		6.680,00 €	<input type="checkbox"/>
Multifunction display Bavaria 2 x Simrad G09 XSE 9" with integrated GoFree™ Wi-Fi and Bluetooth; all-weather touch screen on main helmstand		7.550,00 €	<input checked="" type="checkbox"/>
VHF Simrad RS40 with inbuilt AIS Receiver and wireless handset Simrad HS40		1.430,00 €	<input type="checkbox"/>
Remote control Simrad OP50 for multifunction display		790,00 €	<input checked="" type="checkbox"/>
Autopilot with heading compass		3.920,00 €	<input checked="" type="checkbox"/>
Mobile phone charger at helm stand		340,00 €	<input checked="" type="checkbox"/>
Search light with remote control		1.020,00 €	<input checked="" type="checkbox"/>
<b>DECK FLOORING</b>			
<b>STANDARD</b>			
GRP, Anti-Slip			
<b>OPTIONS</b>			
Teak on cockpit floor		5.910,00 €	<input checked="" type="checkbox"/> C
Teak on side deck		8.980,00 €	<input type="checkbox"/>
Teak on floor stern settee (not with storage box)		1.520,00 €	<input checked="" type="checkbox"/>
Esthec on cockpit floor		5.850,00 €	<input type="checkbox"/>
Esthec on side deck		9.950,00 €	<input type="checkbox"/>
Esthec on bathing platform		450,00 €	<input type="checkbox"/>
Esthec on floor stern settee (not with storage box)		1.600,00 €	<input type="checkbox"/>
<b>DECK</b>			
<b>STANDARD</b>			
<ul style="list-style-type: none"> <li>Deck in hand lay-up sandwich construction, cockpit floor and foredeck with non-slip structure, Signal White</li> <li>Hardtop GRP, white</li> <li>Patio door, grey tinted safety glass (only COUPÉ)</li> </ul>	<ul style="list-style-type: none"> <li>Deck innerliner GRP, signal white</li> <li>Anchor locker with hatch, self-drained</li> <li>Hatch for engine room</li> <li>Deck hatch (1 x) to open for forward cabin</li> <li>Railing, stainless steel</li> </ul>	<ul style="list-style-type: none"> <li>Mooring cleats (6 x), stainless steel, fixed</li> <li>Handhold and handrail at hard top and companion way, stainless steel</li> <li>Cup holder on foredeck, stainless steel</li> <li>Bow fitting with anchor roller, stainless steel</li> </ul>	
<b>OPTIONS</b>			
Sun protection for front and side windows, outside, semi-transparent		2.540,00 €	<input checked="" type="checkbox"/>
Windlass, electric		2.150,00 €	<input checked="" type="checkbox"/>
Wireless remote control for windless with chain counter (only with electr. windlass)		1.300,00 €	<input checked="" type="checkbox"/>
Anchor 16 kg incl. chain (8 mm, 50 m), galvanized (only with electr. windlass)		880,00 €	<input type="checkbox"/>
Anchor 16 kg incl. chain (8 mm, 50 m), stainless steel (only with electr. windlass)		2.780,00 €	<input checked="" type="checkbox"/>
Mooring kit (6 fenders and 4 mooring lines)		550,00 €	<input checked="" type="checkbox"/>



<b>COCKPIT</b>			
<b>STANDARD</b>			
<ul style="list-style-type: none"> <li>Helmstand with seat bench, foldable bolster</li> <li>USB sockets at helm stand (2 x)</li> <li>Co-pilot seat in driving direction with integrated sun lounge</li> <li>Sliding companionway door with lock, grey tinted</li> <li>Sport steering wheel</li> <li>Cup holder at helmstand and co-pilot seat, stainless steel</li> </ul>	<ul style="list-style-type: none"> <li>Settee at wetbar with fixed table and upholstery</li> <li>Settee at stern with upholstery and swivelling backrest</li> <li>Windscreen made of clear safety glass</li> <li>Side windows made of tinted safety glass incl. sliding windows</li> <li>Windscreen wiper with synchronous control, starboard and port</li> </ul>	<ul style="list-style-type: none"> <li>Washer system windscreen</li> <li>Ventilation system for windscreen</li> <li>Fabric sunroof, manual (only HT)</li> <li>Sunroof GRP, electric (only COUPE)</li> <li>Covered ceiling panels in upper salon (only COUPE)</li> <li>Cockpit lighting</li> <li>Cockpit shower with cold and warm water</li> <li>Cockpit upholstery "vinyl"</li> </ul>	
<b>OPTIONS COCKPIT</b>			
Fabric sunroof, electric (only HT)		1.890,00 €	<input type="checkbox"/>
Sunroof GRP, electric (only HT)		6.950,00 €	<input checked="" type="checkbox"/>
Footrest at helmstand with sport steering wheel, adjustable in height		830,00 €	<input checked="" type="checkbox"/>
Table wetbar settee, foldable (not with patio door)		3.510,00 €	<input checked="" type="checkbox"/>
Table wetbar settee with telescopic stools (only COUPE)		3.250,00 €	<input type="checkbox"/>
Storage box for stern settee (not with table for stern settee)		2.860,00 €	<input type="checkbox"/>
Table stern settee, manually lowerable with upholstery (not with storage box GRP)		3.840,00 €	<input type="checkbox"/>
Seat between wetbar- and stern settee (only HT)		850,00 €	<input checked="" type="checkbox"/>
Light package exterior incl. underwater-, step- and side deck lighting		2.860,00 €	<input checked="" type="checkbox"/> C
<b>OPTIONS COCKPIT UPHOLSTERY</b>			
Cockpit upholstery "Silververtex"		1.900,00 €	<input type="checkbox"/>
Cockpit upholstery "Silververtex" with Diamond Stitching		2.960,00 €	<input checked="" type="checkbox"/>
Cockpit upholstery "Checker"		3.100,00 €	<input type="checkbox"/>
Sunpad on foredeck		1.780,00 €	<input checked="" type="checkbox"/> C
<b>OPTIONS HOODS</b>			
Sun protection on aft deck (Bimini)		3.750,00 €	<input type="checkbox"/>
Camper cover		3.190,00 €	<input checked="" type="checkbox"/>
<b>WETBAR</b>			
<b>STANDARD</b>			
<ul style="list-style-type: none"> <li>Wetbar with sink and cover</li> </ul>	<ul style="list-style-type: none"> <li>Stowage box in wetbar</li> </ul>		
<b>OPTIONS</b>			
Refrigerator wetbar, 80 liters, 12 V		1.650,00 €	<input checked="" type="checkbox"/> C
Cockpit grill, electric, (powered by Generator or Shore-Power)		1.940,00 €	<input type="checkbox"/>
<b>BATHING PLATFORM</b>			
<b>STANDARD</b>			
Bathing platform with teak and telescopic bathing ladder incl. insertable handhold			
<b>OPTIONS</b>			
Bathing platform with teak, hydraulically lowerable, maximum load 300 kg (only with additional board battery 2 x 140 Ah; not with D4 engine)		22.670,00 €	<input type="checkbox"/>
Gangway, manual mounted and foldable		2.270,00 €	<input type="checkbox"/>
<b>INTERIOR LAYOUT</b>			
<b>STANDARD</b>			
<ul style="list-style-type: none"> <li>Forward cabin with double berth and storage</li> <li>Head with separable shower</li> </ul>	<ul style="list-style-type: none"> <li>Aft cabin with island berth, sofa, storage and head with separate shower</li> <li>Companion way with 5 steps</li> </ul>	<ul style="list-style-type: none"> <li>Salon with U-sofa incl. table, L-galley with cupboards and storage</li> </ul>	
<b>OPTIONS</b>			
Additional stool for salon table in upholstery colour		850,00 €	<input checked="" type="checkbox"/>
<b>INTERIOR STYLING</b>			
<b>STANDARD</b>			
<ul style="list-style-type: none"> <li>Wood colour, American Walnut</li> <li>Floor, Elm</li> <li>Covered ceiling panels in salon, vinyl</li> </ul>	<ul style="list-style-type: none"> <li>Blinds in bathrooms for hull windows</li> <li>Ceiling lighting, LED</li> <li>Upholstery "Comfort"</li> </ul>	<ul style="list-style-type: none"> <li>Standard mattresses for all berths</li> </ul>	



<b>OPTIONS STYLING</b>			
Wood colour, Nordic Oak	3.120,00 €	<input checked="" type="checkbox"/>	
Floor, Wenge	1.070,00 €	<input checked="" type="checkbox"/>	
Coloured fronts for upper cupboards in salon and galley	620,00 €	<input checked="" type="checkbox"/>	
Venetian blinds for hull windows in salon, aft and forward cabin	2.050,00 €	<input checked="" type="checkbox"/>	C
Lighting package interior	2.650,00 €	<input checked="" type="checkbox"/>	C
<b>OPTIONS UPHOLSTERY</b>			
Upholstery in artificial leather	1.250,00 €	<input type="checkbox"/>	
Upholstery in leather	3.550,00 €	<input checked="" type="checkbox"/>	
Cold foam mattress with memory top for all berths	1.600,00 €	<input checked="" type="checkbox"/>	C
<b>INTERIOR EQUIPMENT – GALLEY</b>			
<b>STANDARD</b>			
<ul style="list-style-type: none"> <li>• Ceramic cook top, electric</li> <li>• Refrigerator, top loader, 110 liters, 12 V</li> </ul>	<ul style="list-style-type: none"> <li>• Sink in stainless steel with cover</li> <li>• Kitchen work top, laminated, black</li> </ul>		
<b>OPTIONS</b>			
Three-burner gas cook top (instead of ceramic cook top, not with gas stove, 3 burner)	1.530,00 €	<input type="checkbox"/>	
Gas stove with three-burner gas cook top, EU (instead of ceramic cook top, not with microwave/ -preparation, refrigerator, 80 liters and three-burner gas cook top)	2.190,00 €	<input type="checkbox"/>	
Microwave, 230 V (not with gas stove or refrigerator, 80 Liter, powered by Generator or Shore-Power)	780,00 €	<input type="checkbox"/>	
Microwave preparation, 110 V (not with gas stove or refrigerator, 80 Liter), (powered by Generator or Shore-Power)	390,00 €	<input type="checkbox"/>	
Refrigerator, 80 liters (not with gas stove and microwave/ -preparation)	1.470,00 €	<input checked="" type="checkbox"/>	
Purified drinking water with UVC-LED technology in wetbar	1.470,00 €	<input checked="" type="checkbox"/>	
Kitchen work top, mineral, "Staten Island Stone"	1.670,00 €	<input checked="" type="checkbox"/>	
Kitchen work top, mineral, "Canvas Mist"	1.670,00 €	<input type="checkbox"/>	
<b>INTERIOR EQUIPMENT – ELECTRICAL SYSTEM</b>			
<b>STANDARD</b>			
<ul style="list-style-type: none"> <li>• Country Version EU</li> <li>• Main panel 12 V / main panel 230 V</li> <li>• Sockets (2 x foreship cabin, 3 x aft cabin, 2 x galley, 1 x salon and 1 x per bathroom)</li> </ul>	<ul style="list-style-type: none"> <li>• Main switch for service and starter batteries</li> <li>• Starter battery 95 Ah (1 x per engine)</li> <li>• Service battery 2 x 140 Ah</li> </ul>	<ul style="list-style-type: none"> <li>• Battery charger, 40 A</li> <li>• Shore power 230 V</li> </ul>	
<b>OPTIONS</b>			
Additional board battery 2 x 140 Ah	1.440,00 €	<input checked="" type="checkbox"/>	
Diesel generator 6,4 kW maximum output, 230 V (for gasoline engine only with additional diesel tank 40 L)	23.740,00 €	<input type="checkbox"/>	
Diesel generator 8,0 kW maximum output, 230 V (for gasoline engine only with additional diesel tank 40 L, recommended for Air conditioning)	27.990,00 €	<input type="checkbox"/>	
Inverter 2.500 W (sine alternating current) for 230 V shore power	3.250,00 €	<input checked="" type="checkbox"/>	
Shore power 110 V	4.990,00 €	<input checked="" type="checkbox"/>	
Diesel generator 6,4 kW maximum output, 110 V (for gasoline engine only with additional diesel tank 40 L)	28.550,00 €	<input type="checkbox"/>	
Diesel generator 8,0 kW maximum output, 110 V (for gasoline engine only with additional diesel tank 40 L, recommended for Air conditioning)	32.440,00 €	<input type="checkbox"/>	
Inverter 2.000 W (sine alternating current) for 110 V shore power	3.750,00 €	<input checked="" type="checkbox"/>	
<b>INTERIOR EQUIPMENT – WATER</b>			
<b>STANDARD</b>			
<ul style="list-style-type: none"> <li>• Fresh-water system</li> <li>• Fresh water tank, 240 liter</li> <li>• Water heater 20 liter operated via engine-cooling circuit and 230V shore power</li> </ul>	<ul style="list-style-type: none"> <li>• Pressurized water system with filter, electric</li> <li>• Toilet for heads (2 x), sea water, manual</li> <li>• Black water system, per head, 70 L</li> <li>• Grey water system, overboard discharge</li> </ul>	<ul style="list-style-type: none"> <li>• Shower in bathroom</li> <li>• Hand shower in bathroom forward cabin</li> <li>• Bilge pump in owners' cabin, electric</li> <li>• Bilge pump in engine bay, electric</li> </ul>	
<b>OPTIONS</b>			
Toilet for heads (2 x), fresh water, electric	1.600,00 €	<input checked="" type="checkbox"/>	C
Grey water system, 110 L	2.710,00 €	<input checked="" type="checkbox"/>	

## INTERIOR EQUIPMENT – CLIMATE CONTROL

(HEATING AND AIR CONDITIONER ARE NOT COMBINABLE)

### OPTIONS

Air Conditioner, Reverse Cycle, 28.000 BTU, 3 Units for salon, foreship cabin and aft cabin, incl. 2nd shore power, 230 V / 110 V (recommended with generator 8,0 kW)	20.900,00 €	<input checked="" type="checkbox"/>
Air Conditioner, Reverse Cycle, 55.000 BTU, 4 Units for salon, foreship cabin, aft cabin and cockpit, incl. 2nd shore power, 230 V / 110 V (recommended with generator 8,0kW)	29.800,00 €	<input type="checkbox"/>
Hot air heating, 4,0 kW, 1 Unit for salon, foreship cabin and aft cabin (for gasoline engine only with additional diesel tank 40 L)	4.350,00 €	<input checked="" type="checkbox"/>
Hot air heating, 4,0 kW, 1 Unit for cockpit incl. ventilation system for windscreen (for gasoline engine only with additional diesel tank 40 L)	4.350,00 €	<input type="checkbox"/>
Additional diesel tank for hot air heating, 40 liter (available only for gasoline engines and only in combination with hot air heating)	1.490,00 €	<input checked="" type="checkbox"/>

### SHIPMENT

#### STANDARD

Transport cover

#### OPTIONS

Steel cradle for oversea transport	6.990,00 €	<input checked="" type="checkbox"/>
Shrink wrapping	1.270,00 €	<input checked="" type="checkbox"/>
Second owner's manual	60,00 €	<input checked="" type="checkbox"/>

Bavaria Yachtbau GmbH, Bavariastraße 1, D-97232 Giebelstadt, Phone +49 9334 942-0, Fax +49 9334 942-1160, [www.bavariayachts.com](http://www.bavariayachts.com), [info@bavariayachts.com](mailto:info@bavariayachts.com)

All prices are in EURO and are valid only in conjunction and at the time of ordering a new yacht ex works Giebelstadt. All measurements and weights are calculations based upon design documents. The brochure is intended for advertisement only and is not part of a contract, warranty or of any offer. We reserve the right to modify or improve our products and to change specifications without notice. We reserve the right to replace the brands/manufacturers mentioned in the price list with equivalent products from other reputable manufacturers. We are not liable for errors and printing mistakes. Aforementioned prices are recommended sales prices for deliveries ex works within 4 months of order placement. Later deliveries are subject to invoicing according to the then valid price list.

Version: 1/2025

Valid from 1<sup>st</sup> August 2024

Publication: 22<sup>nd</sup> July 2024 – The previous price list loses its validity.

Language/Taxes: English pricelist/all prices excl. VAT

  
**BAVARIA YACHTS**